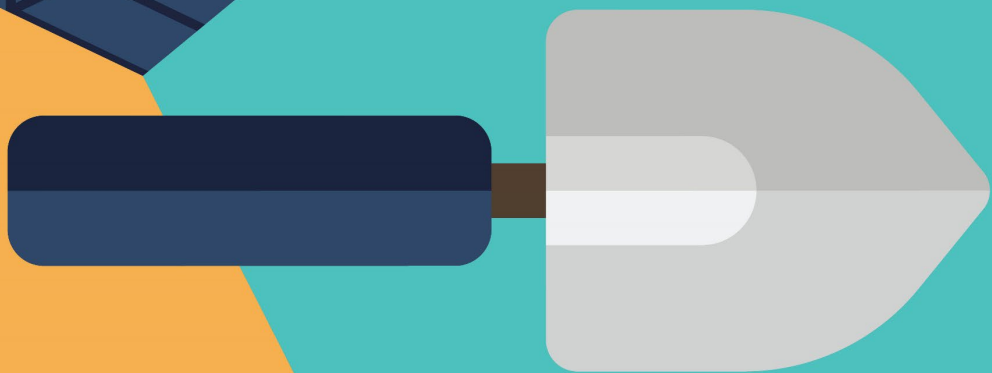


READY, SET RELIEF



Plan Well, Spend Wisely



SOUTH DAKOTA BREAKOUT SESSION

South Dakota Presenters



Pat Overom

ICS Principal
pat.overom@ics-builds.com
612-817-1048



Michael Hubbard

ICS Regional Manager
michael.hubbard@ics-builds.com
605-261-5616



SD ESSER III Funding Information

- The good news is that the federal government has allocated nearly **\$180 billion** to assist K-12 Schools get back to a “New Normal”.
 - Over **\$343.8 million** of this has been ear-marked for South Dakota Districts.
- ESSER III allocations are to be budgeted and tracked separately from ESSER I and ESSER II funds that were previously allocated.
 - **A minimum 20%** set-aside has been directed for uses to address learning loss through the implementation of evidence-based interventions.
- The State of South Dakota is **still in the process** of establishing specific **dates** and **deadlines** associated with the ESSER III process.

SD ESSER III Funding Information

Receiving Funding Process (Cont.)

- **Funds are drawn through reimbursement.** This means schools must expend actual dollars (not just have contracted dollars) prior to receiving funds. Fund draw deadlines will be quarterly starting FY22 but in the case of construction, schools will want to draw monthly to manage cashflow.
- ESSER III funds require a school to publish an **In-Person Instruction Plan** on their district website **within 30 days of receiving funds**. The district must seek public comment prior to publishing the plan.



- **2021 Infrastructure Report Card**

- **53%** of schools need to upgrade ventilation
- **33%** have capacity issues
- National funding gap **\$38 billion/per year**

- **Current state gaps: \$125 million**



2021 Infrastructure Report Card

- **53%** of schools need to upgrade ventilation
- **33%** have capacity issues
- National funding gap **\$38 billion/per year**

D+



Construction & IAQ Improvements

Federal Requirements for Construction & IAQ Improvements (Pre-Approval)

- Per federal rules capital expenditures for construction, building remodeling and large equipment purchases with a **unit price of \$5,000.00** require prior approval.
- South Dakota Department of Education (SDE) has no authority to approve any construction or equipment purchases after the fact.
- Approval is given for capital expenses that directly address the impact of COVID-19 on schools.
- **DON'T FORGET:** It is important to put time into rationale into how the project fits criteria of funding.
 - Federal auditors may be looking at this to assure your expenses meet the intent of the law.
 - May delay funds if SDE requests additional information to evaluate and make an approval.

Construction & IAQ Improvements

Steps for Getting Approval from SEAs for Construction & IAQ Projects

- **Step 1:** Explain the purpose of the project.
- **Step 2:** Explain how the completed construction or remodeling is necessary and a direct result of the COVID-19 public health emergency.
- **Step 3:** Describe where the remodeling or construction is to occur. If remodeling, include the specific building or space to be remodeled.
- **Step 4:** State whether the area is owned by the local educational agency (LEA) or if it is leased space.
- **Step 5:** Estimated start and finish date.
- **Step 6:** Name of the construction company.
- **Step 7:** Itemized estimate from the construction company.
- **Step 8:** Estimated the total cost of the project.
- **Step 9:** Submit the request to South Dakota Department of Education.

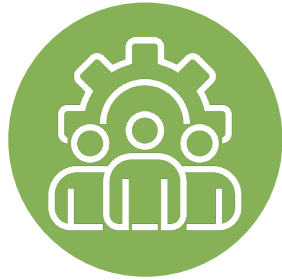


Strategic Approach

- **Why develop a strategic approach to ESSER III Federal Funding?**
 - Heard stories of districts jumping at the latest fad of temporary/portable air cleaners as the magic bullet to COVID indoor air quality.
 - These technologies may have a place in the hierarchy of solutions to address infectious disease control, but many have overblown or unproven claims and **some may make the Indoor Air Quality worse.**
 - ASHRAE has been very specific and careful about what technologies are **proven** and what are not.



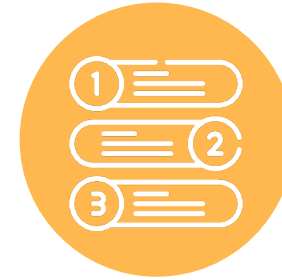
STRATEGIC APPROACH



Step 1
Identify Team and Resources



Step 2
Perform Needs Assessment



Step 3
Prioritize Needs



Step 4
Outline Solutions



Step 5
Implement Solutions



Step 6
Account For All Funds



What Should Schools be Doing Right Now?

- Take a breath and a step back to be strategic with this funding opportunity.
- Rebuild connections with students, families and shift operations to the needs of the students and community.
- Focus on the three areas below:

#1

What do we need for immediate relief?

#2

What intermediate needs will we have in the next 6-12 months?

#3

What shifts are needed in existing operations and assets to meet this future need?

AVAILABLE TOOLS & RESOURCES

- South Dakota Department of Education website for the latest information: <https://doe.sd.gov/coronavirus/startingwell.aspx>
- ASHRAE guidance for re-opening buildings: www.ashrae.org
- ASHRAE position document on infectious aerosols
- Designing infectious disease resilience into school buildings ([Google this](#))
- CDC Guidelines for Ventilation: <https://www.cdc.gov/coronavirus/2019-ncov/community/schools-childcare/operation-strategy.html>
- ESSER Fund Tracker: <https://www.ncsl.org/ncsl-in-dc/standing-committees/education/cares-act-elementary-and-secondary-school-emergency-relief-fund-tracker.aspx>
- ICS Healthy Buildings Checklist: www.ics-builds.com
 - Facility assessments, prioritization, strategic planning, and other resources available
- Facilities health checklist – reach out to Mike Hubbard



Educational Vision		Operations/Maintenance			
	Yes	No		Yes	No
1. Does your long-range facilities plan align with your educational vision?	<input type="checkbox"/>	<input type="checkbox"/>	1. Do you know the annual cost of emergency services in your district?	<input type="checkbox"/>	<input type="checkbox"/>
2. Are your classrooms and spaces conducive to the programming you envision today and in the future?	<input type="checkbox"/>	<input type="checkbox"/>	2. Does the district have a preventative maintenance schedule?	<input type="checkbox"/>	<input type="checkbox"/>
3. Would your teachers/principals agree that you have appropriate learning spaces?	<input type="checkbox"/>	<input type="checkbox"/>	3. Are your preventative maintenance services done in-house or outsourced?	<input type="checkbox"/>	<input type="checkbox"/>
4. Does this plan have a funding path?	<input type="checkbox"/>	<input type="checkbox"/>	4. Does the district track/manage the cost of preventative maintenance?	<input type="checkbox"/>	<input type="checkbox"/>
Infrastructure Renewal Plan			5. Does your district track and report maintenance using maintenance management software?	<input type="checkbox"/>	<input type="checkbox"/>
1. Do you know when major building systems need to be replaced and in	<input type="checkbox"/>	<input type="checkbox"/>			

Please contact Michael Hubbard at 605-261-5616
or michael.hubbard@ics-builds.com for more information



How Can ICS Help?

- Assist your district to establish effective communication plan
- Perform district needs assessment w/district stakeholder input to determine district needs
- Assist district leaders to prioritize needs
- Outline solutions to address needs - utilize all available district funding sources
- Implement solutions in accordance with all state and federal guidelines
- Assist district to internally account for all funds in accordance with state and federal guidelines



Q&A





Stay Connected with ICS

 / ics-builds.com

 / [ICS Consulting, Inc.](https://www.linkedin.com/company/ics-consulting-inc)

 / [@icsconsultinginc](https://www.facebook.com/icsconsultinginc)

 / [@ics_consulting_](https://twitter.com/ics_consulting)

