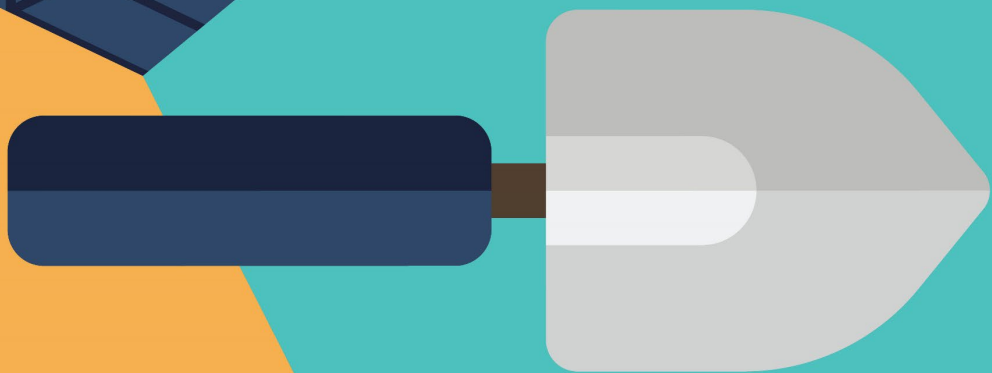
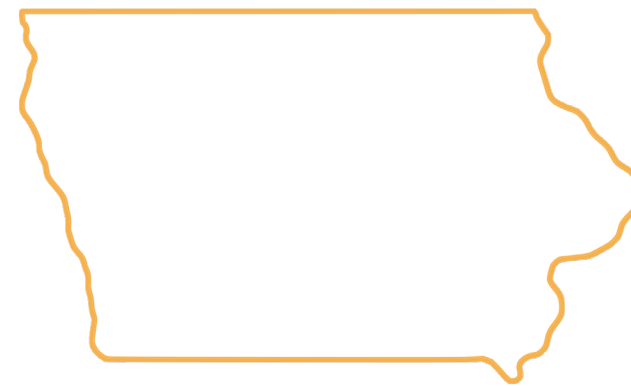


# READY, SET RELIEF



*Plan Well, Spend Wisely*



## **IOWA BREAKOUT SESSION**

---

# Iowa Presenters



**Ryan Hoffman**

Project Development Manager  
[ryan.hoffman@ics-builds.com](mailto:ryan.hoffman@ics-builds.com)  
[ryan.hoffman@cpmi.com](mailto:ryan.hoffman@cpmi.com)  
612-803-3526



**Karen Klein**

Cooperative Accounts Manager  
[karen.klein@ics-builds.com](mailto:karen.klein@ics-builds.com)  
651-728-1880

# ICS and CPMI History

- ICS acquisition of CPMI on January 1, 2021
- CPMI has a 50-year history in construction management, owner's representation, cost estimating and project planning
- Local office in West Des Moines





# IA ESSER III Funding Information

- **Given the amount of information surrounding ESSER funds we assume:**
  - You are aware of dates & deadlines information
  - You understand where and how to access funds
  - You are aware of your district's total allocation
- **If you are unaware of any item above**, contact Karen Klein and she'll send you the required documentation.
- Additionally, It's important to remember that **your district must spend down ESSER I & ESSER II funding** prior to claiming this ESSER III funding.



# IA ESSER III Funding Information

## *Receiving Funding Process*

- **20% of each ESSER III 90% award** must be spent on activities that address “learning loss” due to the COVID-19 pandemic.
- The ESSER III 90% awards will be loaded into CASA Financial as two separate grant opportunities.
  - **80% of the total** will be available to be used for a wide variety of allowable activities in response to COVID-19.
  - **20% of the total** will be available to be used only for activities that support students’ learning recovery following the disruptions caused by the COVID-19 pandemic.

Iowa Award	Amount Available to LEAs (90%)	Minimum Reservation of LEA Funds to Address Learning Loss (20%)
Award 1	\$464,709,730	\$92,941,946
Award 2	\$232,354,864	\$46,470,973
<b>Total Iowa Award</b>	<b>\$697,064,594</b>	<b>\$139,412,919</b>

# IA ESSER III Funding Information

## *Receiving Funding Process (Continued)*

- **Funds are drawn through reimbursement.** This means schools must expend actual dollars (not just have contracted dollars) prior to receiving funds. Fund draw deadlines will be quarterly starting FY22 but in the case of construction, schools will want to draw monthly to manage cashflow.
- ESSER III funds require a school to publish an **In-Person Instruction Plan** on their district website **within 30 days of receiving funds**. The district must seek public comment prior to publishing the plan.





# Construction and IAQ Improvements

## *Federal Requirements for Construction & IAQ Improvements (Pre-Approval)*

- Per federal rules capital expenditures for construction, building remodeling and large equipment purchases with a **unit price of \$5,000.00** require prior approval.
- Approval is given for capital expenses that directly address the impact of COVID-19 on schools.
  - Iowa Department of Education meets on a **weekly basis** to approve **capital expenditure projects of \$100K or more.**
- It is important to put time into rationale into how the project fits criteria of funding.
  - Federal auditors may be looking at this to assure your expenses meet the intent of the law.
  - May delay funds if Dept of Ed requests additional information.

# Construction & IAQ Improvements

## *Steps for Getting Approval from SEAs for Construction & IAQ Projects*

- **Step 1:** Explain the purpose of the project.
- **Step 2:** Explain how the completed construction or remodeling is necessary and a direct result of the COVID-19 public health emergency.
- **Step 3:** Describe where the remodeling or construction is to occur. If remodeling, include the specific building or space to be remodeled.
- **Step 4:** State whether the area is owned by the local educational agency (LEA) or if it is leased space.
- **Step 5:** Estimated start and finish date.
- **Step 6:** Name of the construction company.
- **Step 7:** Itemized estimate from the construction company.
- **Step 8:** Estimated the total cost of the project.
- **Step 9:** Submit the request to Iowa Department of Education.







# Strategic Approach

**Step 1 - Identify team and resources to outline district priorities (cross-sectional teams)**

**Step 2 - Perform needs assessment (all areas of competing applications for funds)**

- Dust off old facilities reports or create one if it does not exist
- Review and reprioritize facility needs in light of COVID era
- Identify deferred maintenance that could be funded by ESSER Funds (All IAQ and related work)
- Ability to control/address IAQ may make the difference in keeping students in school while addressing parent/faculty/staff safety concerns or sending kids back to cyber learning platforms.

**Step 3 – Prioritize needs using a decision matrix**

- The more you can use a data driven approach to support decisions the better
- Use of these funds will be scrutinized by internal and external stakeholders, have justifications prepared before the questions/accusations are leveled

# Strategic Approach (Continued)

## Step 4 – Outline solutions to address needs

- Solutions should be data driven and fact based (easily displayed to community)
- Should identify all financial resources available to the district to implement
- All outcomes should provide long-term value to the district to address current and future limitations

## Step 5 – Implement solutions in accordance with all state and federal guidelines (facilities portion)

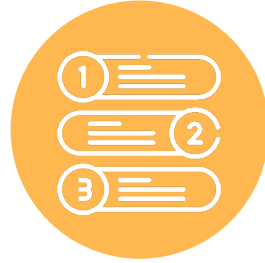
## Step 6 – Internally account for all funds in accordance with state and federal guidelines



**Step 1**  
Identify Team  
and Resources



**Step 2**  
Perform Needs  
Assessment



**Step 3**  
Prioritize  
Needs



**Step 4**  
Outline  
Solutions



**Step 5**  
Implement  
Solutions



**Step 6**  
Account For  
All Funds



# What Should Schools be Doing Right Now?

- Take a breath and a step back to be strategic with this funding opportunity.
- Rebuild connections with students, families and shift operations to the needs of the students and community.
- Focus on the three areas below:

**#1**

What do we need for immediate relief?

**#2**

What intermediate needs will we have in the next 6-12 months?

**#3**

What shifts are needed in existing operations and assets to meet this future need?

## AVAILABLE TOOLS & RESOURCES

- ICS Healthy Buildings Checklist
- ASHRAE guidance for Re-Opening Buildings
- Designing infectious disease resilience into school buildings
- CDC guidelines for ventilation in buildings
- ASHRAE position document on infectious aerosols
- Facility Assessments, Prioritization, Strategic Planning and Other resources available if needed



HEALTH & SAFETY	YES	NO
1. Are ceiling tiles sagging or appear wet/stained?	<input type="radio"/>	<input type="radio"/>
2. Is there an odor of mold or dampness?	<input type="radio"/>	<input type="radio"/>
3. Do the windows have moisture on the inside?	<input type="radio"/>	<input type="radio"/>
4. Is there frost build up on doors or windows?	<input type="radio"/>	<input type="radio"/>
5. Do doors stick in summer but not in winter?	<input type="radio"/>	<input type="radio"/>
6. Are there bubbles in or gaps between vinyl flooring tiles?	<input type="radio"/>	<input type="radio"/>

INDOOR AIR QUALITY	YES	NO
7. Test and Balance: is a current T&B report available showing airflow to occupied spaces, outside air and exhaust CFMs vs design?	<input type="radio"/>	<input type="radio"/>
7a. Do all values fall within 10% of design?	<input type="radio"/>	<input type="radio"/>
8. Are supply, return, intake, and exhaust openings clear of obstructions?	<input type="radio"/>	<input type="radio"/>

INDOOR AIR QUALITY (continued)	YES	NO
9. Do control devices operate as designed? (BAS and also dampers and valves)	<input type="radio"/>	<input type="radio"/>
10. Is air distributed evenly throughout occupied spaces?	<input type="radio"/>	<input type="radio"/>
11. If filtration levels have been changed during the pandemic, have fans/motors been adjusted to meet additional pressure drop?	<input type="radio"/>	<input type="radio"/>
12. Can building automation system alert you if part of the ventilation system is not operational (eg supply fan is off or filters are plugged)?	<input type="radio"/>	<input type="radio"/>
13. Are trendlogs set up to confirm air delivery and/or flag problems?	<input type="radio"/>	<input type="radio"/>

If you answered "NO" to any of the questions above, contact your controls contractor or ICS to improve your indoor air quality.



# Q&A





# CONTACT US



**Ryan Hoffman**

Project Development Manager  
[ryan.hoffman@ics-builds.com](mailto:ryan.hoffman@ics-builds.com)  
[ryan.hoffman@cpmi.com](mailto:ryan.hoffman@cpmi.com)  
612-803-3526



**Karen Klein**

Cooperative Accounts Manager  
[karen.klein@ics-builds.com](mailto:karen.klein@ics-builds.com)  
651-728-1880