



# COVID CONVO: ENGAGE WITH LOCAL SUPERINTENDENTS ON COVID-19

Every Friday through October 30<sup>th</sup>  
October 23<sup>rd</sup> | 12:00 p.m. – 1:00 p.m.





# Introduction from Jeff

- **Comments from Jeff:** welcome to Stefanie and Kris!
- **Fred Nolan:** updates, public school numbers, county case rates, and saliva testing locations
- **Updates from Mora/East Central/Bemidji:** positive news story, school and county COVID case rates, changes in learning plans, and stories about testing, tracking, acceptance, and resistance
- **Steve Sallee:** testing and acceptance in SE Minnesota – similar to Superintendents
- **Neil Carlson:** new saliva testing and accuracy
- **Todd Rapp:** update on communications
- **Q&A**



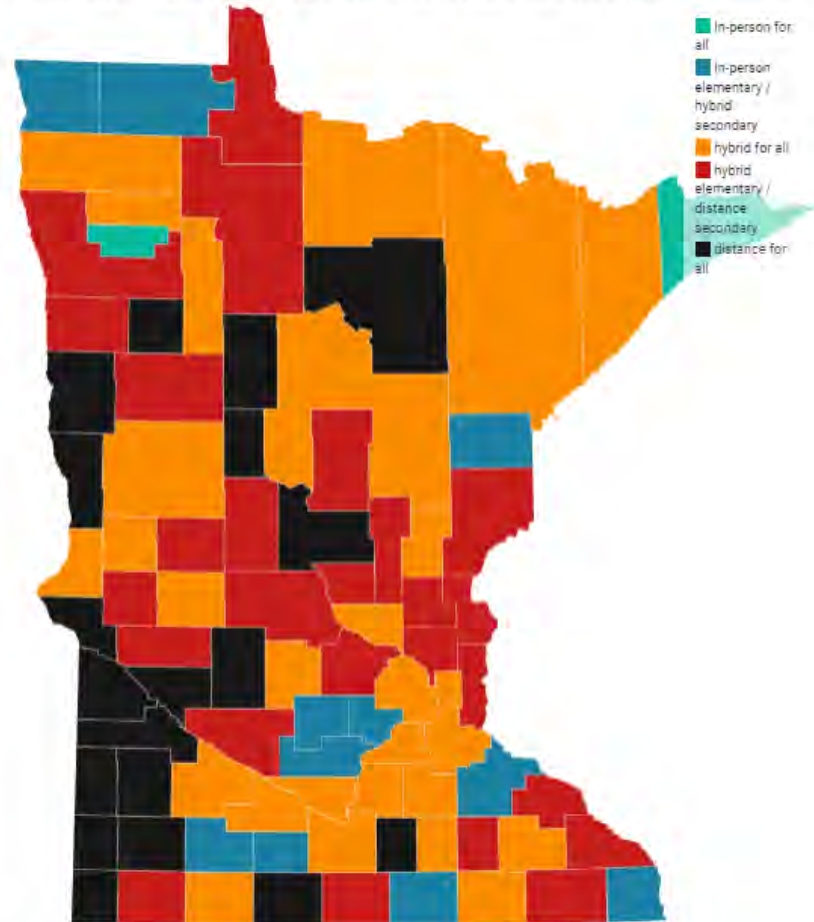
# Case Rates Grow Statewide

## MDE's Scapula Approach:

- 33 schools with 5+ cases, 22 Secondary, in 28 counties (10/22), and 544 schools with one or more cases in last two weeks
- **County case rates: 8/29:** 83% < 20 17% > 20 | **10/10:** 15% < 20 85% > 20  
50+ **8/29:** 2 **10/10:** 19
- **Deputy Commissioner Mueller in 10/22 Commissioner call in:**
  - Move to school level data, cases for students, for staff, how many students and staff had you have out. Current capacity of hospital. Get at very local level on spread.
  - Schools at same level in same district may have had different learning models.
  - It is about student and staff safety. It is not about sports. Students and staff safety.
  - Understand this is difficult to communicate. Use these as talking points.

**Suggested school instruction model by new coronavirus cases**

Under Minnesota guidelines, schools should examine the last 14 days of new coronavirus cases in their county when considering which learning model they should employ. The suggested model is based on new cases per 10,000 county residents. If the new case rate is under 10, for example, schools should consider offering in-person instruction for all students. However, several other factors should be considered. Schools can change their learning models during the school year and must offer full-time distance learning as an option.



Data is from Oct. 22 release and includes test specimens collected Sept. 27 - Oct. 10.  
Map: Josh Wages / Pioneer Press • Source: Minnesota Department of Health • Get the data • Created with Datawrapper

# COVID Convo

Mora Public Schools




# Share Positive Stories

- Learning
- Success
- Recognition
- Teamwork
- Leadership
  - Power of Positive Team
  - Leader PLC



# Current COVID Situation

- **School: 10 students and staff**
- **Steady case counts: 25/10,000**
- **Remain hybrid**
- **Learning model transition**
  - Follow the steps
  - Commissioner call



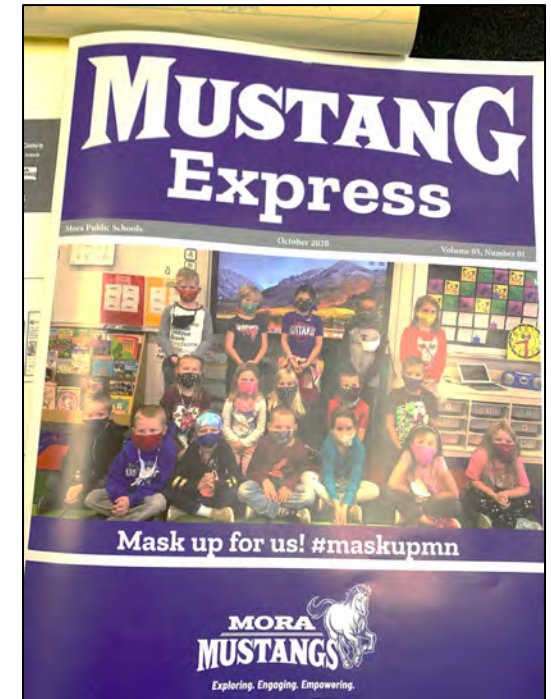
Mora Phases	Number of Cases per 10,000 over 14 days by County of Residence	Learning Model
PHASE 1	0 - less than 10	In-Person Learning - K-12th Grades
PHASE 2	10 - less than 20	In-Person Learning - K-6th Grades Hybrid Learning - 7th-12th Grades
PHASE 3	20 - less than 30	Hybrid Learning - K-12th Grades
PHASE 4	30 - less than 50	Hybrid Learning - K-6th Grades Distance Learning - 7th-12th Grades
PHASE 5	50+	Distance Learning - K-12th Grades

## 14-day case rate per 10,000 people by date of specimen collection

County Name	8/16-8/29	8/23-9/5	8/30-9/12	9/6-9/19	9/13-9/26	9/20-10/3	9/27-10/10
Kanabec	12.50	6.87	15.62	24.99	24.37	21.87	24.99

# COVID Stories

- Testing
- Contact Tracing
- Quarantine
  - Sports - pods
  - Transportation - bus
  - Classroom - teacher
- When in doubt, contact public health
- Make the best decision possible based on the guidance we have





# COVID Convo

East Central Public Schools





# Positives

## Hybrid tutoring

- **Using our paraprofessionals to offer tutoring three times a week**
  - Tuesday during advisory (grades 7-9)
  - Friday during advisory (grades 10-12)
  - Wednesday (grades 7-12)
    - Parent transportation
    - 9AM-12PM

## Discipline

- Office referrals are down significantly

## Professional Growth

- Additional tools to help students learn
- Collaboration and support given and received willingly



# Positive Cases in the School

- **Case #1**

- 11<sup>th</sup> grade student
- Affected five (5) students
- Affected one (1) teacher
- Affected one (1) paraprofessional
- **Teacher taught remotely**
  - Used Zoom
  - Had a substitute paraprofessional monitor behavior
  - No instructional days were lost in the classroom

- **Case #2**

- Football player
- No confirmed test
- Many symptoms, including loss of taste and smell
- Cancelled homecoming game
- Quarantined team
- Quarantined coaches (also teaching staff)
- Letter to athletes
- Notified team from our October 14 game

# COVID-19 Two-Week Trend Data

- **Number of cases per 10,000**
- **This week's meeting with Pine County**
  - 38.4 cases (including FCI-Sandstone Inmate)
  - 15 with inmates removed
- **Next week's estimate**
  - 35.05 cases (including FCI-Sandstone Inmate)
  - 20.02 with inmates removed



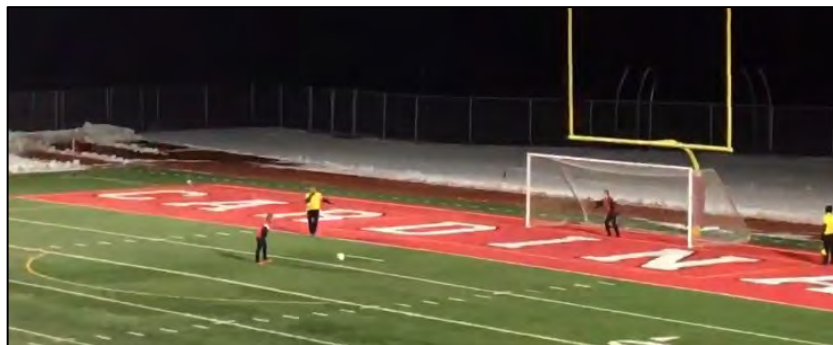
# COVID Convo

Bemidji Area Schools ISD 31



# Positive News

- Girls tennis champions
- Boys Cross country champs!
- Girls Soccer (4th year)
- Girls Swimming - best diver
- Football shuffle



# Exciting News

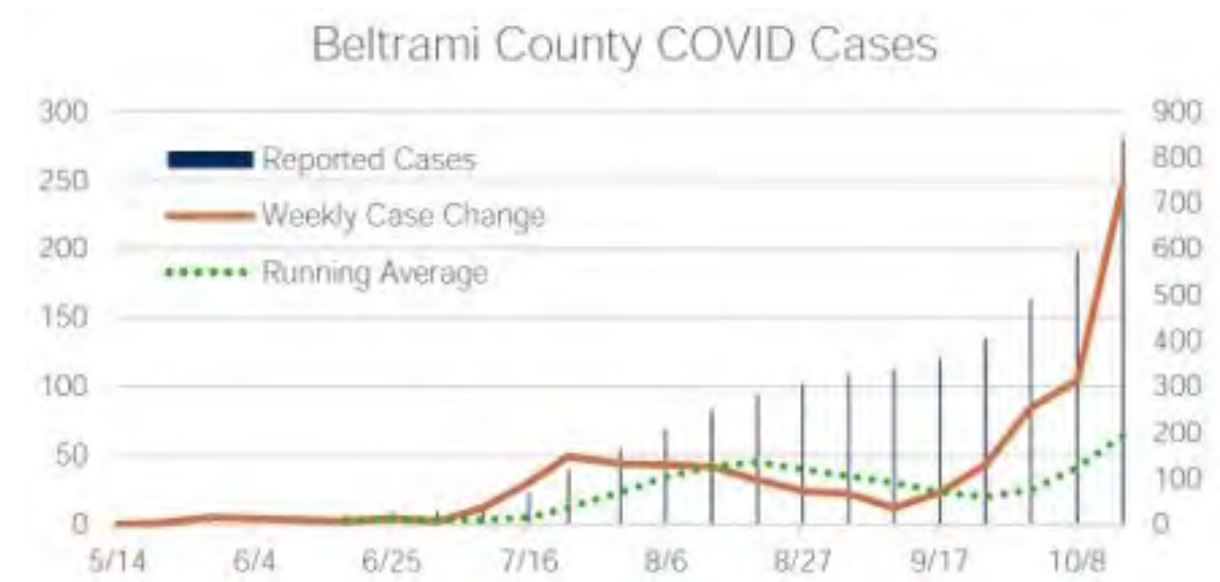
- Dr. Wilcox on Today Show!
- PSA and video project
- No community spread in schools
- Decline in cases in schools
- Virtual town hall meeting
- City childcare partnership



# Increasing COVID Rates

- Immediate 14-day Average: **57.48**
- MDH 14-day Average: **49.66**
- Cumulative District Total: **41**
- Current County COVID Rate: **265 cases**

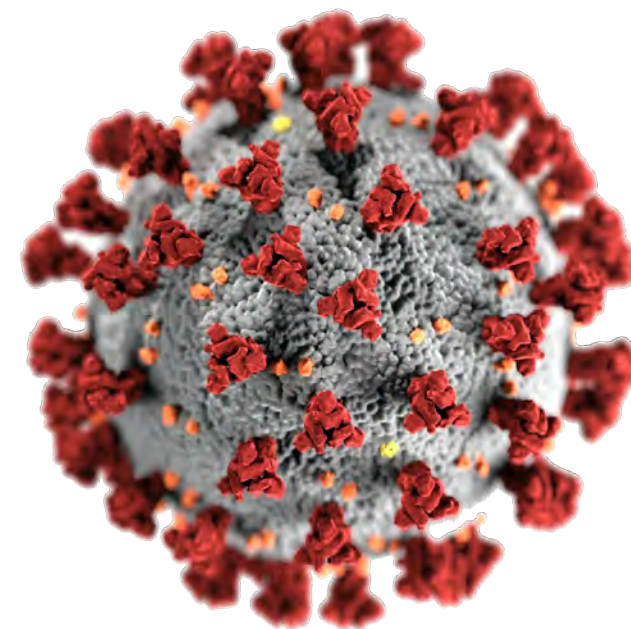
Beltrami	<b>County Name</b>
46,117	<b>Population of Beltrami County</b>
10/08/20 - 10/21/20	<b>Time Period</b>
265	<b>Current # of Cases in Time Period</b>
<b>57.48</b>	<b>Current 14-Day Case Rate</b>





# COVID Fatigue

- **41 cumulative cases in ISD 31:** 19 student cases and 22 staff cases
- **Current ISD 31 cases:** 5 student cases and 7 staff cases
- Administration is getting fatigued!
- Community fatigue!
- People choosing NOT to test (Trump rally)
- Parents sending sick students to school
- People not cooperating with contact tracers
- Anger and frustration



# COVID Convo

## Service Cooperative Update



# COVID Convo

Public Health with Neil Carlson





# CDC Changes

- Contact tracing became more difficult
- New CDC study with a [correctional facility employee](#) suggests 15 minutes of cumulative exposure over 24-hour period does result in COVID transmission
- **Factors:**
  - Quality of face covering and compliance with proper wearing
  - Ventilation
  - How infectious the person is (strength of source)



# MASK QUALITY TISSUE TEST





# Types of Tests (Harvard Health Blog)

- **PCR**

- Swab (nose)
- Swab (throat)
- Saliva

- Turnaround in days (saliva will probably be faster when local in MN up and running)

- **Accuracy**

- False positives – close to zero
- False negatives 2-37%
- Nose swab has fewest false negatives

## **Antigen**

- Swab (nose)
- Swab (throat)

- Turn around in minutes (like pregnancy test)

- **Accuracy**

- False positives close to zero
- False negatives 50%
- Newer tests coming out



# Saliva Tests

- Community-based testing
- One free for teachers and school staff ([MDH](#))
- Order codes currently expire December 30, 2020



# COVID Convo

Communications with Todd Rapp







# Q&A



# Thank You for Your Time!

 / [ics-builds.com](https://ics-builds.com)

 / [ICS Consulting, Inc.](https://www.linkedin.com/company/ics-consulting-inc)

 / [@icsconsultinginc](https://www.facebook.com/icsconsultinginc)

 / [@ics\\_consulting\\_](https://twitter.com/ics_consulting_)





# Contact Information

- Fred Nolan: [fred@e-f-services.com](mailto:fred@e-f-services.com)
- Jeff Schiltz: [jeff.schiltz@ics-builds.com](mailto:jeff.schiltz@ics-builds.com)
- Arif Quraishi: [arif.quraishi@ics-builds.com](mailto:arif.quraishi@ics-builds.com)
- Stefanie Youngberg: [syoungberg@eastcentral.k12.mn.us](mailto:syoungberg@eastcentral.k12.mn.us)
- Kris Chryst: [kchryst@eastcentral.k12.mn.us](mailto:kchryst@eastcentral.k12.mn.us)
- Dan Voce: [danvoce@moraschools.org](mailto:danvoce@moraschools.org)
- Tim Lutz: [tim\\_lutz@isd31.net](mailto:tim_lutz@isd31.net)
- Steve Sallee: [ssallee@ssc.coop](mailto:ssallee@ssc.coop)
- Neil Carlson: [carls001@umn.edu](mailto:carls001@umn.edu)
- Todd Rapp: [toddrapp@rappstrategies.com](mailto:toddrapp@rappstrategies.com)



# Presentation Resources

- [East Central Public Schools Reopening Schools Plan](#)
- [Mora Public Schools Reopening Schools Plan](#)
- [Bemidji Area Schools Reopening Schools Information](#)
- [ICS Reopening Schools Website](#)
- [Correctional Facility Employee CDC Study](#)
- [Harvard Health Blog](#)
- [MDH](#)
- [Pioneer Press Article – Rising COVID Cases Means 19 MN Counties May Need to Close Schools](#)