



# **COVID CONVO: ENGAGE WITH LOCAL SUPERINTENDENTS ON COVID-19**

Every Friday through September 25<sup>th</sup>  
September 18<sup>th</sup> | 12:00 p.m. – 1:00 p.m.



# Introduction from Arif

- **Mayo announcement for live county data**
- **Polls on COVID Convo topics and continuing in October**
- **Fred Nolan:** connectivity resources and tips from tech coordinators
- **Update from Bemidji:** calming jitters, enrollment (actual vs. projected), and any additional updates
- **Update from East Central and Mora:** each district's numbers and the effect on their educational model, what each district is doing to ensure student connectivity and attendance during distancing learning/hybrid model
- **Neil Carlson:** layering protective measures to reduce risk of COVID indoors and masks
- **Todd Rapp:** communications around schools now that they're in session
- **Q&A**



# Polls for the Group



## **Poll #1:**

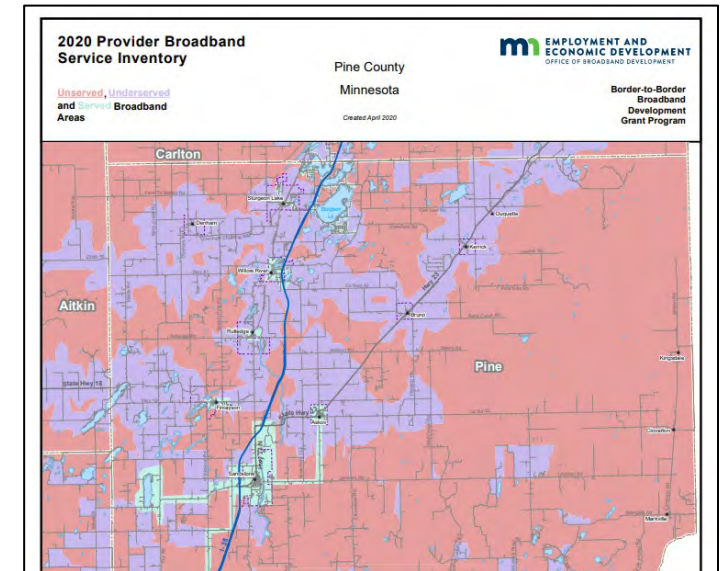
**What content has been valuable for you/what do you want to hear more about during these COVID Convos?**

## **Poll #2:**

**Would you continue to attend COVID Convos at noon on Fridays through October?**

# Connectivity for Hybrid and DL

- Upload speeds are critical—consider calling providers
- Find locations for students—churches, or school busses with hotspots
- Support services model—pay provider for FRE students when parent requests
- **DEED maps of broadband availability through two options:**
  - By county and by home address
  - Contact the Office of Broadband Development at 651-259-7610 or via email at [deed.broadband@state.mn.us](mailto:deed.broadband@state.mn.us)



**Pine County Broadband Availability Map**

# COVID Convo

Bemidji Area Schools ISD 31



# Calming Jitters

- **Settling in for our first week**
  - It has been a great week!
  - Excited students and students that are complying with both masks and social distancing
  - MDH Decision Tree
- **A few staff members still concerned about our model**
  - Hybrid Model 2.0
- **Food service**
  - Summer Food Program with two (2) open sites
- **Transportation**
  - 50% capacity working well
  - Parents transporting students



# Enrollment Numbers

School District:		Bemidji Area Schools				
COVID-19 Enrollment	Projected Enrollment	In-Person or Hybrid*	Distance Learning*	Total Enrollment	Enrollment Melt	COVID-19 Percent Enrollment Melt
El: K-6	2575	1970	454	2424	151	<b>6%</b>
Sec: 7-12	2761	2189	371	2560	201	<b>7%</b>
Total	5336	4159	825	4984	352	<b>7%</b>

- **What Bemidji is doing to limit enrollment melt due to COVID-19**
  - DL Attendance support team
  - Digital Navigators

# Enrollment Numbers

- Losses to online charter schools - **47**
- Losses to home schooling - **204**
- Losses to online PSEO – **24**
- Returning to home district - **35**
- Students/families dropping off radar - **42**

Online charter schools

+

Home schooling

+

Online PSEO

= loss in enrollment



# New This Week

- **COVID numbers going down**
  - Calls for a model change
  - Holding steady with current models
    - Labor Day Fallout
    - Trump Rally Fallout
- **Trump Rally Jitters**
  - Questions/calls about holding school
  - Using Emergency Operations Plan

**14-day case rate per 10,000 people by date of specimen collection**

County Name	7/12 - 7/25	7/19 - 8/1	7/26 - 8/8	8/2 - 8/15	8/9 - 8/22	8/16 - 8/29	8/23 - 9/5
Alitkin	3.79	4.42	10.74	9.47	3.16	3.79	10.74
Anoka	17.70	18.19	19.11	19.92	19.26	19.14	18.22
Becker	14.80	13.32	9.77	6.81	5.63	8.88	9.18
Beltrami	18.43	19.08	18.43	11.06	9.97	9.76	6.51
Benton	11.56	9.05	7.79	6.79	12.07	19.11	17.60
Big Stone	7.97	3.99	0.00	7.97	17.94	17.94	23.92
Blue Earth	25.63	23.07	20.36	18.55	22.16	44.48	57.30
Brown	8.73	8.73	5.95	6.35	7.54	11.11	11.50
Carlton	5.91	4.78	7.88	9.85	8.72	9.00	8.16
Carver	19.22	18.12	16.83	18.52	18.52	14.14	11.15
Cass	8.27	9.65	9.99	7.24	6.20	6.89	4.13
Chippewa	8.33	13.32	13.32	20.82	17.49	12.49	27.48
Chisago	8.77	9.14	8.22	7.67	14.62	16.45	16.08
Clay	13.69	9.87	8.44	7.01	7.80	16.08	36.78



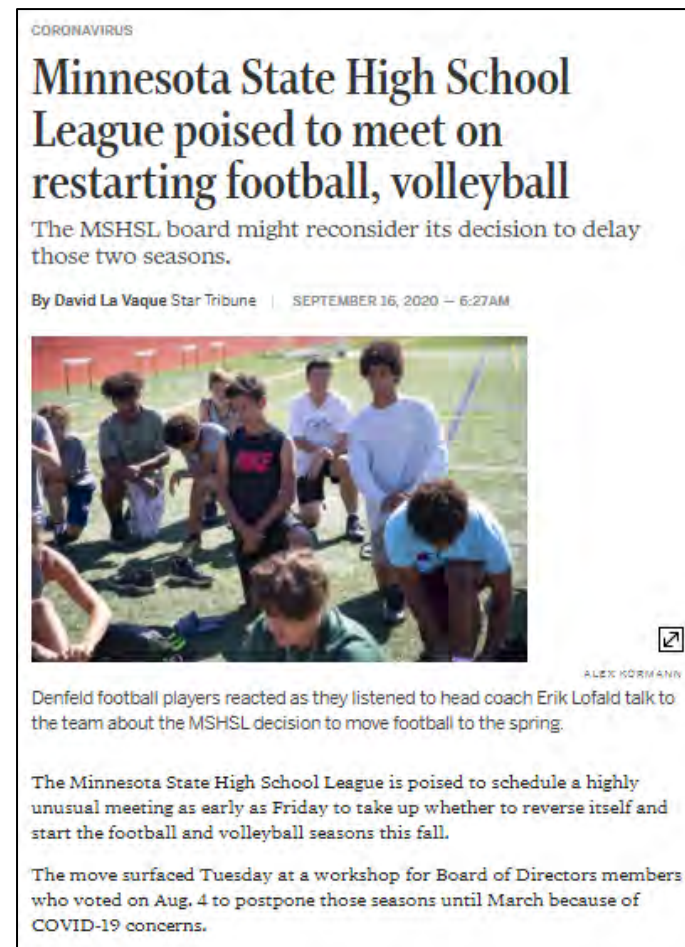
# COVID Convo

East Central Public Schools



# Situation Update

- Last week's case rate = **8.58 cases per 10,000**
- This week's case rate = **9.27 cases per 10,000**
- Prediction for next week = **10.3 cases per 10,000**
- Cases connected to school: none yet, however...
- Public Health meetings: meeting more often now
- MSHSL reopening discussions about fall sports



# Distance Learning Updates

- **Digital Navigators (coming soon)** – support for families
- **High School (7 – 12) = 55 students**
  - Teachers record class periods and upload to Schoology (asynchronously)
  - Distancing learning staff member – check and connect
  - Professional Development - PLCs
- **Elementary (K – 6) = 43 students**
  - Three teachers assigned to DL – working to get students connected
  - Positives: dedicated staff members focused on DL (building resident experts)
  - Areas of growth: supporting students across multiple grade levels



# Hybrid Transition Planning

- **Preparation for teachers – two days of transition planning**
- **Food service planning**
  - Ordering food: minimum of two weeks in any learning model.
  - One lunch option for in-person students
  - Packing meals for DL students
  - Distribution of meals: sending home meals with in-person students

## Hybrid Learning Plan

### General Description

In this planning scenario, East Central Schools will be required to limit the overall number of people in school facilities and on transportation vehicles to 50% maximum occupancy. Sufficient social distancing with at least 6 feet between people must occur at all times. Schools must also include plans for contactless pick up and/or delivery of meals and school materials for days that students and staff are not in the school building, as well as implementation of a school-age care program for critical workers. This scenario may be implemented if COVID-19 metrics worsen at the local, regional, or statewide level. Hybrid Learning may also be implemented if East Central Schools experiences a cluster of cases within a classroom or the school.

### Instructional Delivery Considerations

**East Central Elementary** - The Hybrid Learning Plan at East Central Elementary will encompass a rotating schedule of students by grade level with a staff person(s) dedicated to supporting distance learning days. Below is a sample schedule (figure 1) reflecting A Group and B Group.

Figure 1

Grade	Teacher	Online Teacher	Monday/Thursday Group A	Tuesday/Friday Group B
Pre K	2 Classroom Teachers	Para/Teacher	12 Students	12 Students
Kindg.	2 Classroom Teachers	Teacher	25 students	26 students
1st	2 Classroom Teachers	Teacher	29 students	30 students
2nd	2 Classroom Teachers	Teacher	23 students	23 students
3rd	2 Classroom Teachers	Teacher	21 students	20 students
4th	2 Classroom Teachers	Teacher	25 students	26 students
5th	2 Classroom Teachers	Teacher	29 students	28 students
6th	2 Classroom Teachers	Teacher	26 students	25 students

# Communication Updates

- **Shifting narrative from "Reopening Plan" to "Learning Models"**
- [Learning Model Transition Plan](#)
- **Reminders for Parents:**
  - Check the website for updates
  - Make/review contingency plans for childcare
  - Set up distance learning spaces at home – get your child prepared
  - Review – MDH Decision Tree
- **Reminders for staff:**
  - Masking requirements – review
  - Over plan lessons – high school could be shifting to A & B schedules
  - Seek out professional development opportunities – WIN (What I Need)
  - Relationships with kids – who are we worried about?
  - High risk staff members – cases are climbing, what support is needed?
  - Administrators – communications are prepared and ready to send

# COVID Convo

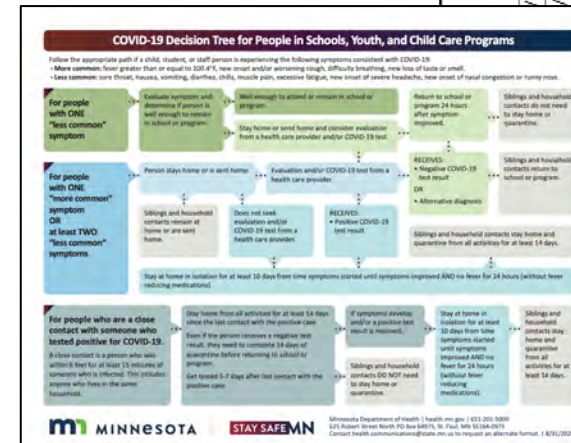
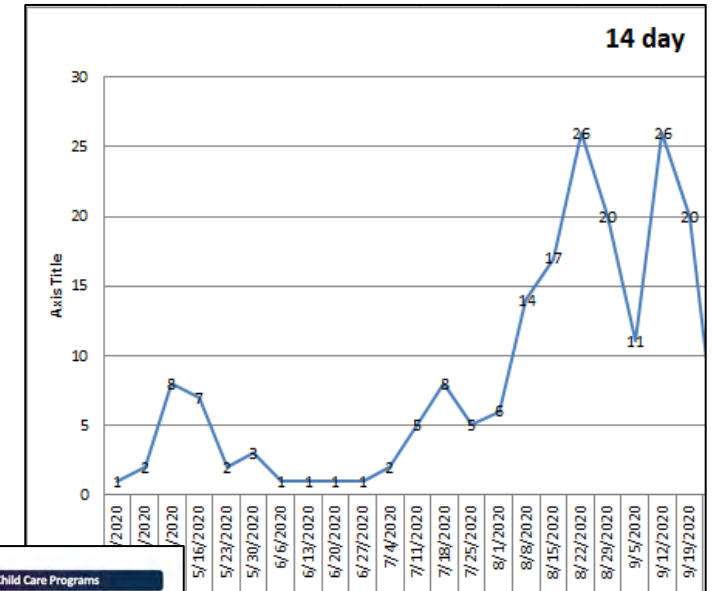
Mora Public Schools





# Current Situation in Mora

- **COVID case rates in Kanabec County: 14.96 per 10,000**
- Expecting rates to continue to increase
- We have had a positive case in our school community
- Practice with the MDH Decision Tree
- Contact tracing with Kanabec County Public Health
- Learning model: in-person/hybrid
- Start preparing for hybrid at the elementary





# Updates from Mora Public Schools

- School is up and running and students are learning
- Recognize and appreciate students, staff, and families
- New routine and expectations are being established
- Team members are stepping up to support operations
- Enrollment when the dust settles: 50 student decrease
- Family flex option: 222 students or 14%
- Digital Navigator to assist families with connecting/Blue Hour
- MSHSL reopening discussions about fall sports



# District Messaging

- **Practice the basics:** masking, social distancing, hand-washing, cleaning, and gatherings
- **Education:** know the symptoms, MDH Decision Tree isolate and quarantine
- **Make a plan:** personal and family plan for changing models
- **Self-care:** educating and engaging our families and staff
- **TEAM:** reinforce our motto of "Better Together" with confidence

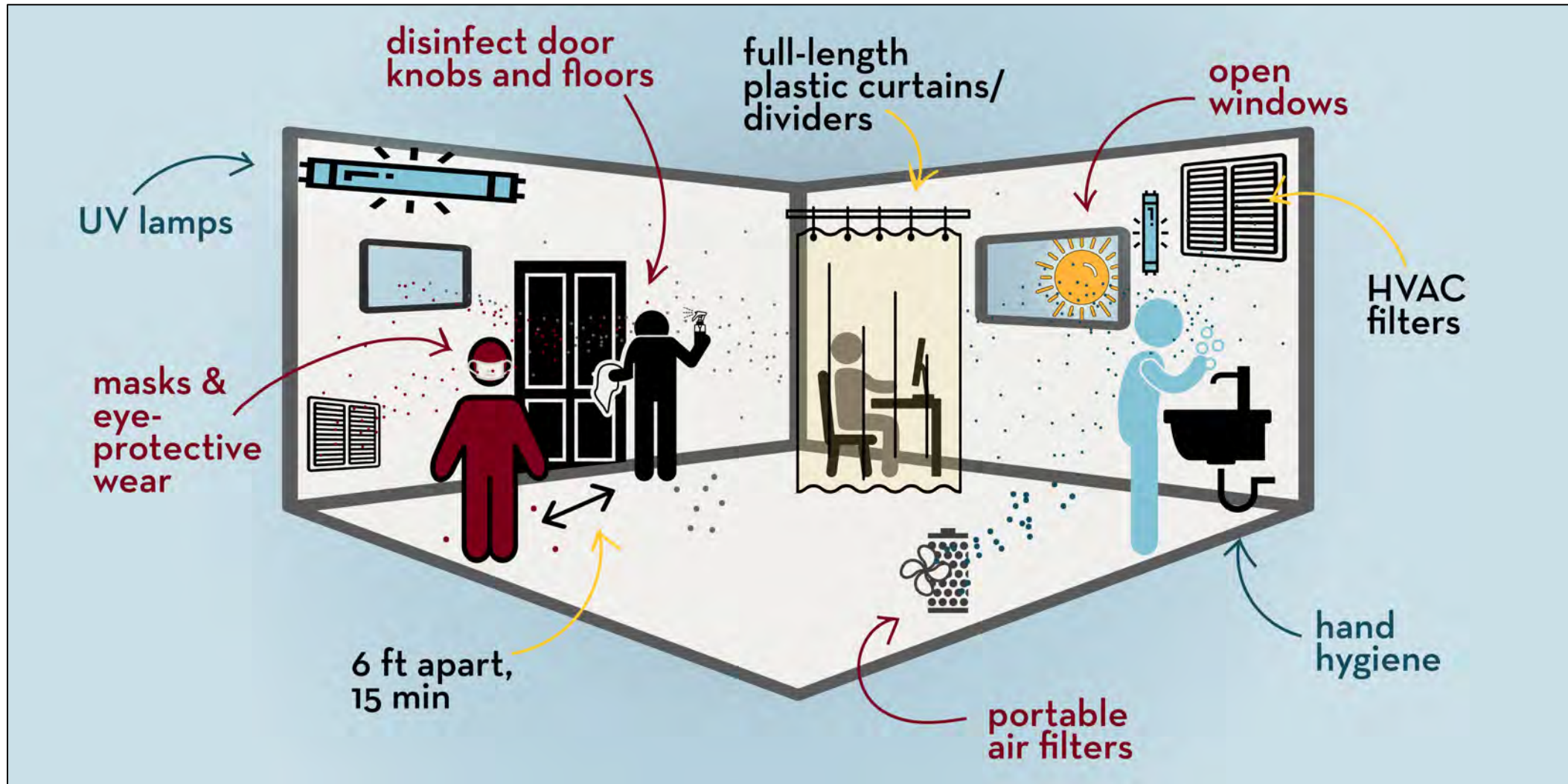


# COVID Convo

Public Health with Neil Carlson



## LAYERING OF PROTECTIVE MEASURES TO REDUCE THE RISK OF COVID-19 INDOORS

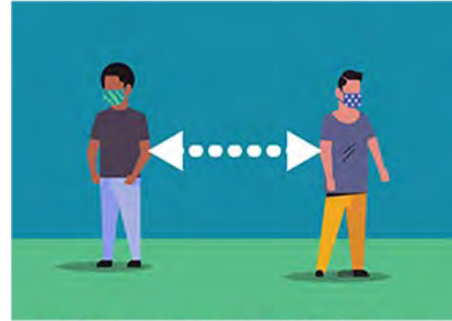




## USING CLOTH FACE COVERINGS (MASKS)



Reduce spread of droplets

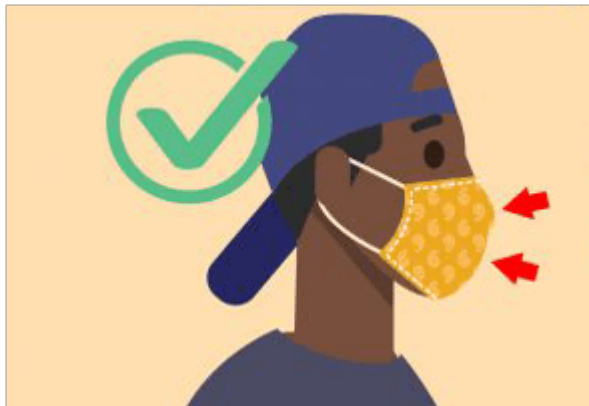


Maintain at least 6 feet distance

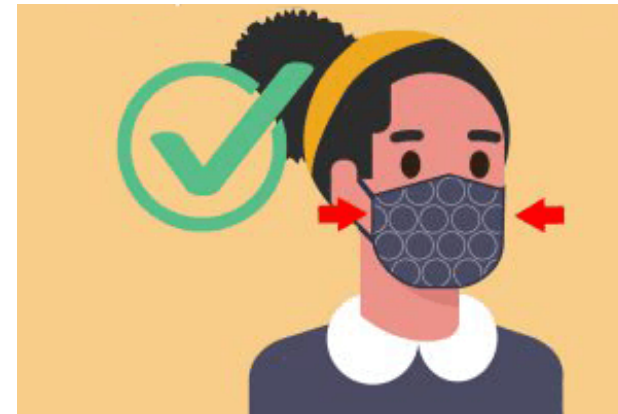
**Understanding the role of face coverings**



**Use two or more layers**



**Cover your nose and mouth**



**Fit snugly with no gaps**

# COVID Convo

Communications with Todd Rapp





# Q&A



# Thank You for Your Time!

 / [ics-builds.com](https://ics-builds.com)

 / [ICS Consulting, Inc.](https://www.linkedin.com/company/ics-consulting-inc)

 / [@icsconsultinginc](https://www.facebook.com/icsconsultinginc)

 / [@ics\\_consulting\\_](https://twitter.com/ics_consulting)







# Contact Information

- Fred Nolan: [fred@e-f-services.com](mailto:fred@e-f-services.com)
- Jeff Schiltz: [jeff.schiltz@ics-builds.com](mailto:jeff.schiltz@ics-builds.com)
- Arif Quraishi: [arif.quraishi@ics-builds.com](mailto:arif.quraishi@ics-builds.com)
- Andy Almos: [aalmos@eastcentral.k12.mn.us](mailto:aalmos@eastcentral.k12.mn.us)
- Dan Voce: [danvoce@moraschools.org](mailto:danvoce@moraschools.org)
- Tim Lutz: [tim\\_lutz@isd31.net](mailto:tim_lutz@isd31.net)
- Jeremy Kovash: [jkovash@lcsc.org](mailto:jkovash@lcsc.org)
- Neil Carlson: [carls001@umn.edu](mailto:carls001@umn.edu)
- Todd Rapp: [todd rapp@rappstrategies.com](mailto:todd rapp@rappstrategies.com)



# Presentation Resources

- [East Central Public Schools Reopening Schools Plan](#)
- [Mora Public Schools Reopening Schools Plan](#)
- [Bemidji Area Schools Reopening Schools Information](#)
- [East Central Schools Learning Model Transition Plan](#)
- [ICS Reopening Schools Website](#)
- [DEED Detailed Maps of Broadband Availability](#)
  - [By county](#) and [by home address](#)
  - [Office of Broadband Development](#)
- [U of M Layering of Protective Measures to Reduce Risk of COVID-19 Indoors](#)
- [U of M Using Cloth Face Coverings \(Masks\)](#)
- [Mayo Clinic COVID-19 Modeling for Counties](#)
- [Mayo Clinic COVID Tracking Tool](#)